

METAL DETECTOR



DETECTRONIC 

DETECTRONIC METAL DETECTOR - MODEL 606

*For all types
of product*

*For detection of
any sort of metal*

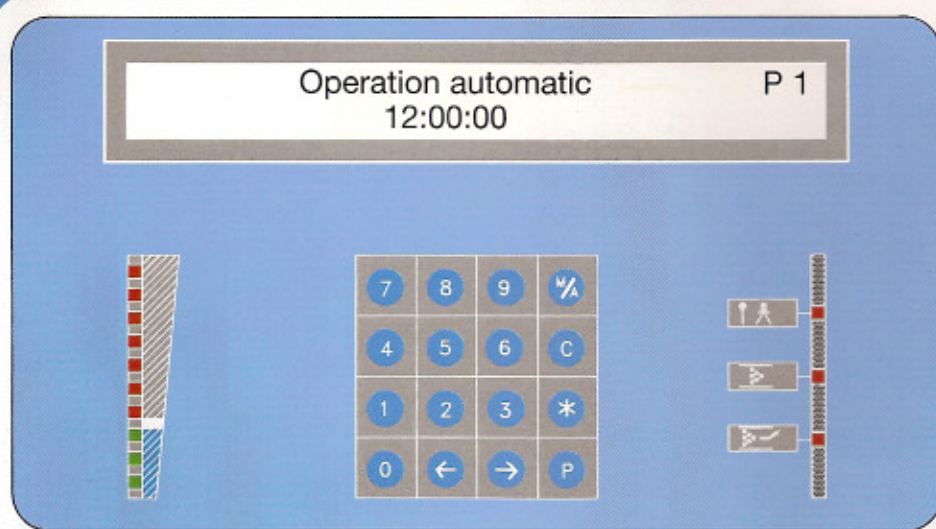
Detectronic model 606 is equipped with modern, high-capacity micro processors which enable the detector to answer to-day's needs for speed and precision.

The detector is provided with a user-friendly, simple control panel, from which a menu disposition allows the setting of all parametres and information about compiled data.

The precise adjustment of the product effect compensation ensures optimum sensitivity.

The keyboard can be locked, with access only by a password of your choice.

All main languages are contained in the memory, and it is easy to change from one language to another.



The detector can communicate with a PC or supervision stations, and programme change can be achieved within a second. The memory allows 100 individual programmes to be saved.

A built-in logbook registers the latest 2.999 detections, with details about settings, date and hour.

The information contained in the logbook can be read from a clear display, or it can be printed.

Printing to a remote station can be, either continual or covering a production period, or any other desired dates / or times.

The log-printing covers:

- Date and hour of test operations.
- Status of the detector (aut./man.).
- Date and hour of metal detection.
- Programme number.
- The ID of the individual detector.
- Total number of detections.

Detectronic model 606 has a sturdy construction, designed to operate within demanding industrial environments with high hygiene demands.

The detector cabinet is sealed to IP 66.

*Sample
of logbook
print.*

DETECTRONIC LOGBOOK

ID 0
Date 25.07.97
Time 12.53
Detections 34

Nr.	Time	Date	Prog	M/A
1	14.19	23.07	P 1	A
2	14.20	23.07	P 1 TEST	A
3	14.20	23.07	P 1	A
4	14.28	23.07	P 1	A
5	14.28	23.07	P 1	A
6	14.28	23.07	P 1	A
7	14.28	23.07	P 1	A
8	14.28	23.07	P 1	A
9	14.52	23.07	P 1	A
10	9.01	24.07	P 1 TEST	A
11	9.02	24.07	P 1	A
12	9.54	24.07	P 1 TEST	A
13	10.02	24.07	P 1	A
14	10.48	24.07	P 1 TEST	M
15	10.48	24.07	P 1	A
16	11.49	24.07	P 1	A
17	12.47	24.07	P 1	A
18	13.20	24.07	P 1 TEST	A
19	13.21	24.07	P 1	A
20	13.53	24.07	P 1	A
21	13.59	24.07	P 1	A
22	13.59	24.07	P 1	A
23	14.00	24.07	P 1	A
24	14.45	24.07	P 1 TEST	A
25	7.45	25.07	P 1 TEST	A
26	7.45	25.07	P 1	A
27	7.47	25.07	P 1	A
28	8.19	25.07	P 1	A
29	8.47	25.07	P 1 TEST	M
30	10.03	25.07	P 1	A
31	10.49	25.07	P 1 TEST	M
32	10.49	25.07	P 1	A
33	10.50	25.07	P 1	A
34	11.24	25.07	P 1	A

DETECTRONIC A/S

We are a Danish company with an average of 30 highly qualified employees, covering the fields electronics, electrical installations and metal fabrication.

The company was founded in 1971.

We deal with:

Production of metal detectors.

Construction of conveyors.

Devising and mounting of electrical controls and supervision equipment.

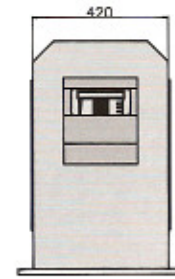
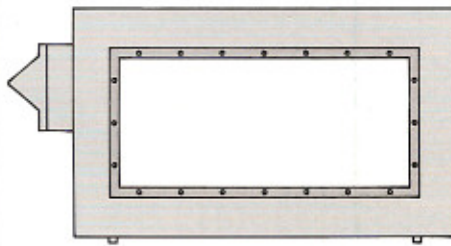
Electrical installations.

Our metal detectors are integrated in food processing lines all over the world.

Main Shareholders:	Karen-Margrethe Øgaard & Søren Øgaard
Managing Director:	Søren Øgaard
A/S Reg. No.:	DK 15.51186
VAT No.:	DK 10 33 27 45
Bank:	Sparekassen Farsø · Reg. No. 9174

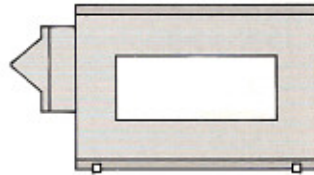
DETECTRONIC DETECTOR PROGRAMME

606-410
Tunnel model



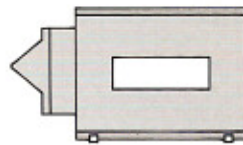
Search Apertures
with width of
up to 2000 mm

606-350
Tunnel model



Search Apertures,
max. 250 mm high,
max. 800 mm wide.

606-250
Tunnel model



Search Apertures,
max. 150 mm high,
max. 500 m wide.

606-240
Pipeline model



Search Apertures
150 mm to
220 mm Ø.

606-160
Pipeline model



Search Apertures
90 mm to
140 mm Ø.

DETECTRONIC

Th. Eriksensvej 7 · Postbox 22 · DK-9640 Farsø
Telefon +45 98 63 19 11 · Telefax +45 98 63 18 44

DISTRIBUTOR: